

Unvired EAM Apps for SAP

Mobilize SAP Plant Maintenance - Preventive & Breakdown Maintenance, Inspections, Master Data Management, Inventory Management



unvired
Digital Delivered

Unvired Inc.
www.unvired.com



unvired
Digital Delivered

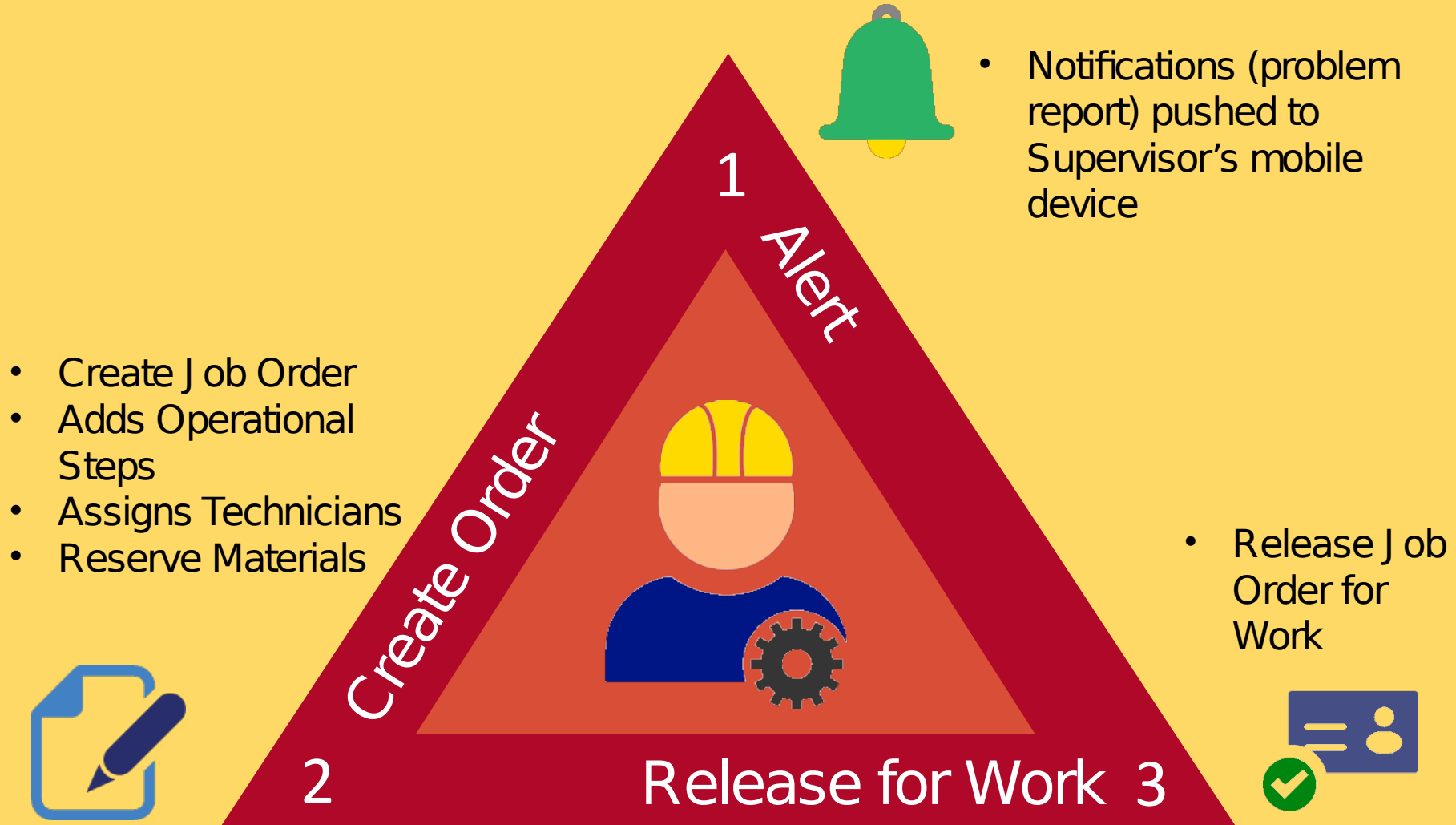
Component	Sub-Component	Features
Notification		<ul style="list-style-type: none">• Get & Search Notifications• Filter Notifications on Device• Notifications Summary• Notification Details – Technical Objects, Work Center & Plant, Dates• Create and Modify Notifications• View Notifications on Maps
	Items	<ul style="list-style-type: none">• Add and Modify Items• Add Object Parts and Damage Codes
	Causes	<ul style="list-style-type: none">• Add and Modify Causes for Items
	Activities	<ul style="list-style-type: none">• Add and Modify Activities for Notifications and Items
	Tasks	<ul style="list-style-type: none">• Add and Modify Tasks for Notifications and Items• Complete Tasks
	Partners	<ul style="list-style-type: none">• View Partner Information• Add and Remove Partners
	Long Text	<ul style="list-style-type: none">• Add Long Text for Notification, Item, Cause, Activity and Task
	User Statuses	<ul style="list-style-type: none">• Change User Status With and Without Numbers for Notification and Task
	Documents	<ul style="list-style-type: none">• View Associated Documents – Standard Operating Procedures, Pictures, Compliance Documents• Documents can be in SAP or any other Document Management System like SharePoint

Component	Sub-Component	Features
Order		<ul style="list-style-type: none"> • Get & Search Orders • Filter Orders on Device • Orders Summary • Order Details – Technical Objects, Work Center & Plant, Dates, Activity Type, System Condition • Create and Modify Orders • View Orders on Maps
	Operations	<ul style="list-style-type: none"> • Add and Modify Operations • Assign Operations to Technicians / Work Centers
	Time Confirmations	<ul style="list-style-type: none"> • Add and Modify Time Confirmations
	Material Confirmations	<ul style="list-style-type: none"> • Add and Modify Material Confirmations – Reservation & Consumption
	Object List	<ul style="list-style-type: none"> • View List of Associated Objects – Equipment, Functional Locations, Notifications & Materials • Add and Remove Objects
	Partners	<ul style="list-style-type: none"> • View Partner Information • Add and Remove Partners
	Long Text	<ul style="list-style-type: none"> • Add Long Text for Order and Operation
	User Statuses	<ul style="list-style-type: none"> • Change User Status With and Without Numbers for Order and Operation
	Documents	<ul style="list-style-type: none"> • View Associated Documents – Standard Operating Procedures, Pictures, Compliance Docs • Capture and Store Signatures • Documents can be in SAP or any other Document Management System like SharePoint

Component	Sub-Component	Features
Equipment / Functional Location		<ul style="list-style-type: none">• View Details – Category, Object Type, Address, GPS Info, Organization, General Info, Manufacturer Info, Location, Organization• Search Equipment / Location• Capture GPS Co-ordinates• View Equipment / Location on Maps• Equipment / Location Hierarchy
	Classification	<ul style="list-style-type: none">• View Characteristics
	Sub-Items	<ul style="list-style-type: none">• View Sub-Locations, Sub-Equipment and Material with BOM• Install & Uninstall Equipment / Location
	Measurement Points	<ul style="list-style-type: none">• View Measurement Points
	History	<ul style="list-style-type: none">• View Historical Orders & Notifications for the Equipment / Location
	User Statuses	<ul style="list-style-type: none">• Change User Status With and Without Numbers
	Documents	<ul style="list-style-type: none">• View Associated Documents – Standard Operating Procedures, Pictures, Compliance Docs• Documents can be in SAP or any other Document Management System like SharePoint
Partners		<ul style="list-style-type: none">• View Partner & Associated Contact Details• Search Partners
Materials		<ul style="list-style-type: none">• View Material Details• Search Materials• Get Latest Material Quantities• View BOM by Plant

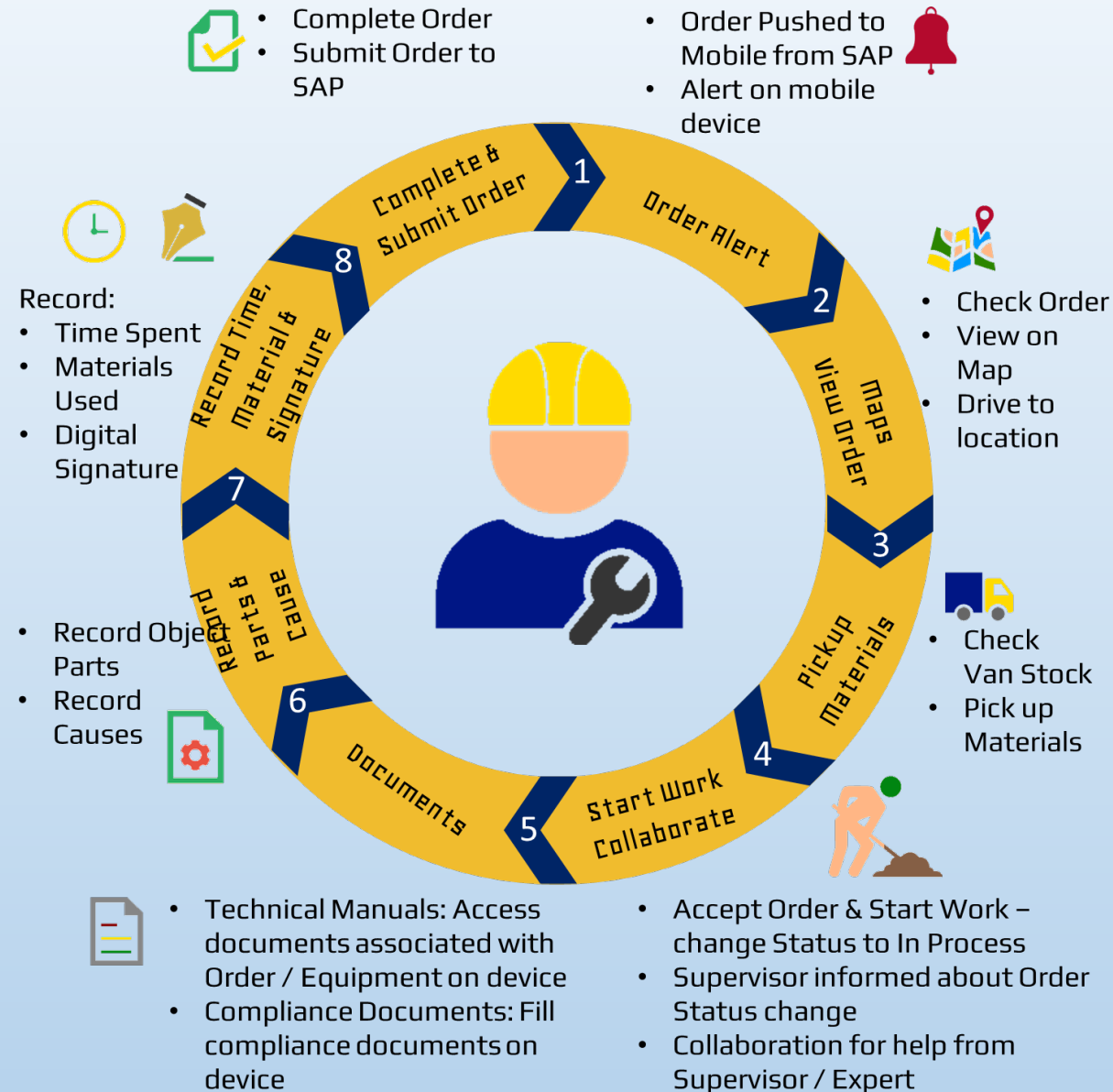
Supervisor - Initialize Maintenance

Sample Process Flow



Technician – Work Process

Sample Process Flow



Supervisor – Review & Dashboards

Sample Process Flow



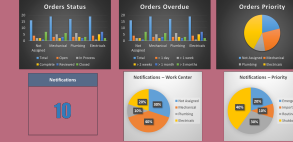
Alert

Supervisor receives alert for Order completion from technician on mobile device



Review & Close

Supervisor reviews Order and closes the Order from mobile device.



Reports

- Completion Status
- Overdue Orders
- Problems Reported

Work Offline





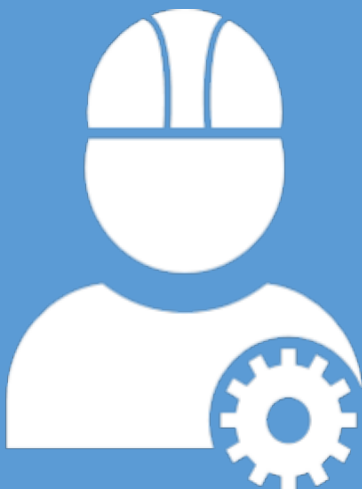
unvired
Digital Delivered

Component	Sub-Component	Features
Order		<ul style="list-style-type: none">• Get Inspection Orders• Inspection Orders Summary• View Orders on Maps
	Technical Objects	<ul style="list-style-type: none">• Equipment and Location that have to be inspected
	Measurement Points	<ul style="list-style-type: none">• View Measurement Points• Record Measurement Documents – Single or Multiple on each Point• Measurement Documents – Characteristics and Code Group based, Counters and Non-Counters, Ranges and Targets• Reset Measurement Documents• View Historical Values
	Partners	<ul style="list-style-type: none">• View Partner Information• Add and Remove Partners
	Long Text	<ul style="list-style-type: none">• Add Long Text for Order and Operation
	User Statuses	<ul style="list-style-type: none">• Change User Status With and Without Numbers for Order and Operation
	Documents	<ul style="list-style-type: none">• View Associated Documents – Standard Operating Procedures, Pictures, Compliance Docs• Capture and Store Signatures• Documents can be in SAP or any other Document Management System like SharePoint

Component	Sub-Component	Features
Equipment / Functional Location		<ul style="list-style-type: none">• View Details – Category, Object Type, Address, GPS Info, Organization, General Info, Manufacturer Info, Location, Organization• Search Equipment / Location• Capture GPS Co-ordinates• View Equipment / Location on Maps• Equipment / Location Hierarchy
	Classification	<ul style="list-style-type: none">• View Characteristics
	Sub-Items	<ul style="list-style-type: none">• View Sub-Locations, Sub-Equipment and Material with BOM• Install & Uninstall Equipment / Location
	Measurement Points	<ul style="list-style-type: none">• View Measurement Points
	History	<ul style="list-style-type: none">• View Historical Orders & Notifications for the Equipment / Location
	User Statuses	<ul style="list-style-type: none">• Change User Status With and Without Numbers
	Documents	<ul style="list-style-type: none">• View Associated Documents – Standard Operating Procedures, Pictures, Compliance Docs• Documents can be in SAP or any other Document Management System like SharePoint
Partners		<ul style="list-style-type: none">• View Partner & Associated Contact Details• Search Partners

**INSPECTION ORDER
PUSHED TO MOBILE**

- Supervisor assigns Inspection Order to technician
- Order pushed to technician's mobile device



**VIEW IN MAPS &
ACCEPT ORDER**

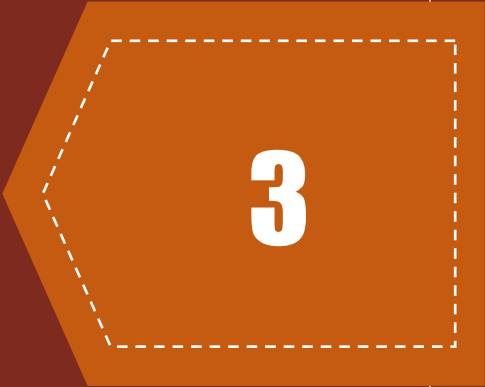


- Technician views Inspection Locations on Map. Works offline.
- Accepts Order (Changes Order Status to In Process)



INSPECT EQUIPMENT & RECORD READINGS

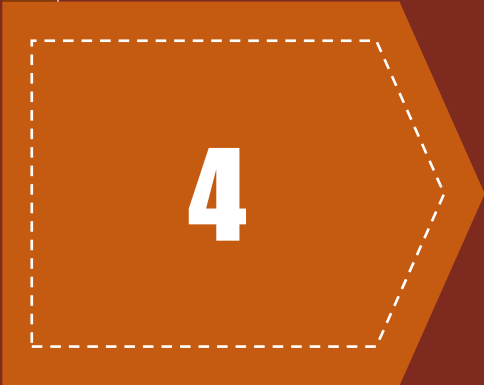
- Technician inspects Equipment & Locations
- Records observed readings / conditions
- Technician's location (GPS) is captured with each reading



VIEW HISTORICAL READINGS & EQUIPMENT INFO



- Technician can view historical readings for Equipment to assess condition better
- View Equipment & Locations details



CAPTURE PICTURES

- Capture pictures of Equipment / Location and associate with Inspection Order



REPORT PROBLEM



- Report problems (raise Notifications) for any malfunction observed
- Associate pictures of problem observed for supervisor assessment

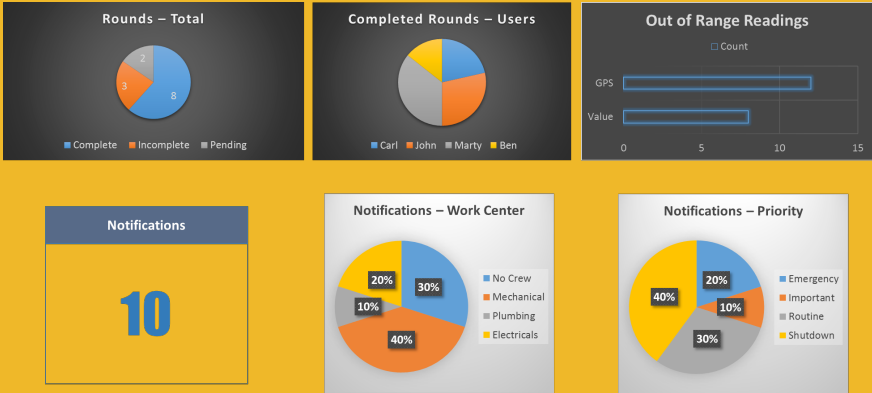


SUBMIT INSPECTION TO SAP

- Submit readings, pictures and problems to SAP



SUPERVISOR REPORTS



- Supervisors receive inspection report daily
- Completed & Pending Inspections, Out of Range Readings and GPS Locations
- Problems Reported



A low-angle, night-time photograph of an industrial facility, likely a refinery or chemical plant. Several large, cylindrical storage tanks are visible, surrounded by a complex network of metal scaffolding, walkways, and pipes. The scene is illuminated by artificial lights, creating a high-contrast image against the dark blue night sky. The image is partially obscured by a white diagonal banner that contains the main title.

UNVIRED MASTER DATA MANAGEMENT FOR SAP PLANT MAINTENANCE



unvired
Digital Delivered

Component	Sub-Component	Features
Equipment / Functional Location		<ul style="list-style-type: none">• View Details – Category, Object Type, Address, GPS Info, Organization, General Info, Manufacturer Info, Location, Organization• Create and Modify Equipment / Functional Location• Search Equipment / Location• Capture GPS Co-ordinates• View Equipment / Location on Maps• Equipment / Location Hierarchy
	Classification	<ul style="list-style-type: none">• View Characteristics
	Sub-Items	<ul style="list-style-type: none">• View Sub-Locations, Sub-Equipment and Material with BOM• Install & Uninstall Equipment / Location
	Measurement Points	<ul style="list-style-type: none">• View Measurement Points
	User Statuses	<ul style="list-style-type: none">• Change User Status With and Without Numbers
	Documents	<ul style="list-style-type: none">• View Associated Documents – Standard Operating Procedures, Pictures, Compliance Docs• Documents can be in SAP or any other Document Management System like SharePoint

A large industrial facility, possibly a refinery or chemical plant, is shown at night. The facility features several tall, cylindrical storage tanks and complex piping structures, all illuminated by warm yellow lights. In the background, a body of water stretches to the horizon under a twilight sky, with distant mountains visible. The foreground shows some lower-level industrial buildings and a parking area with a few vehicles. The image is partially overlaid by a large orange and blue geometric shape in the top-left corner and a white diagonal banner.

UNVIRED INVENTORY MANAGEMENT FOR SAP



unvired
Digital Delivered

Component	Features
Stock Overview	<ul style="list-style-type: none">View Stock Information by Plant, Storage Location & BatchGraphical View
Storage Location Movement	<ul style="list-style-type: none">Move Materials across Plants & Storage Locations
Purchase Requisitions	<ul style="list-style-type: none">Create Purchase Requisitions
Goods Receipt	<ul style="list-style-type: none">Receive Goods based on Purchase Orders
Goods Issue	<ul style="list-style-type: none">Issue goods based on Work Order or Cost Center
Goods Return	<ul style="list-style-type: none">Receive goods based on Work Order or Cost Center
Delivery	<ul style="list-style-type: none">Picking the goods for the delivery and posting it (delivering to the customer)